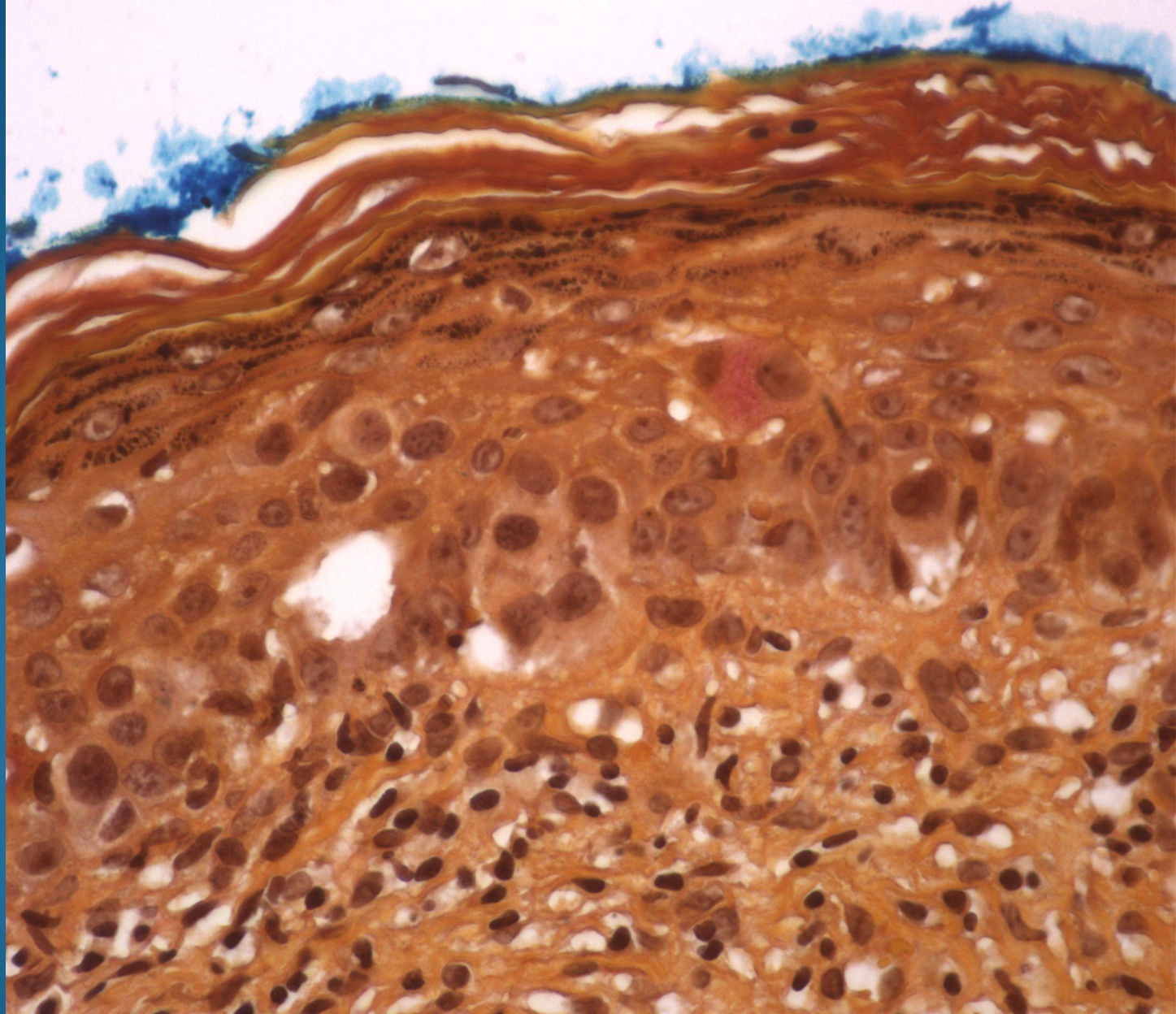


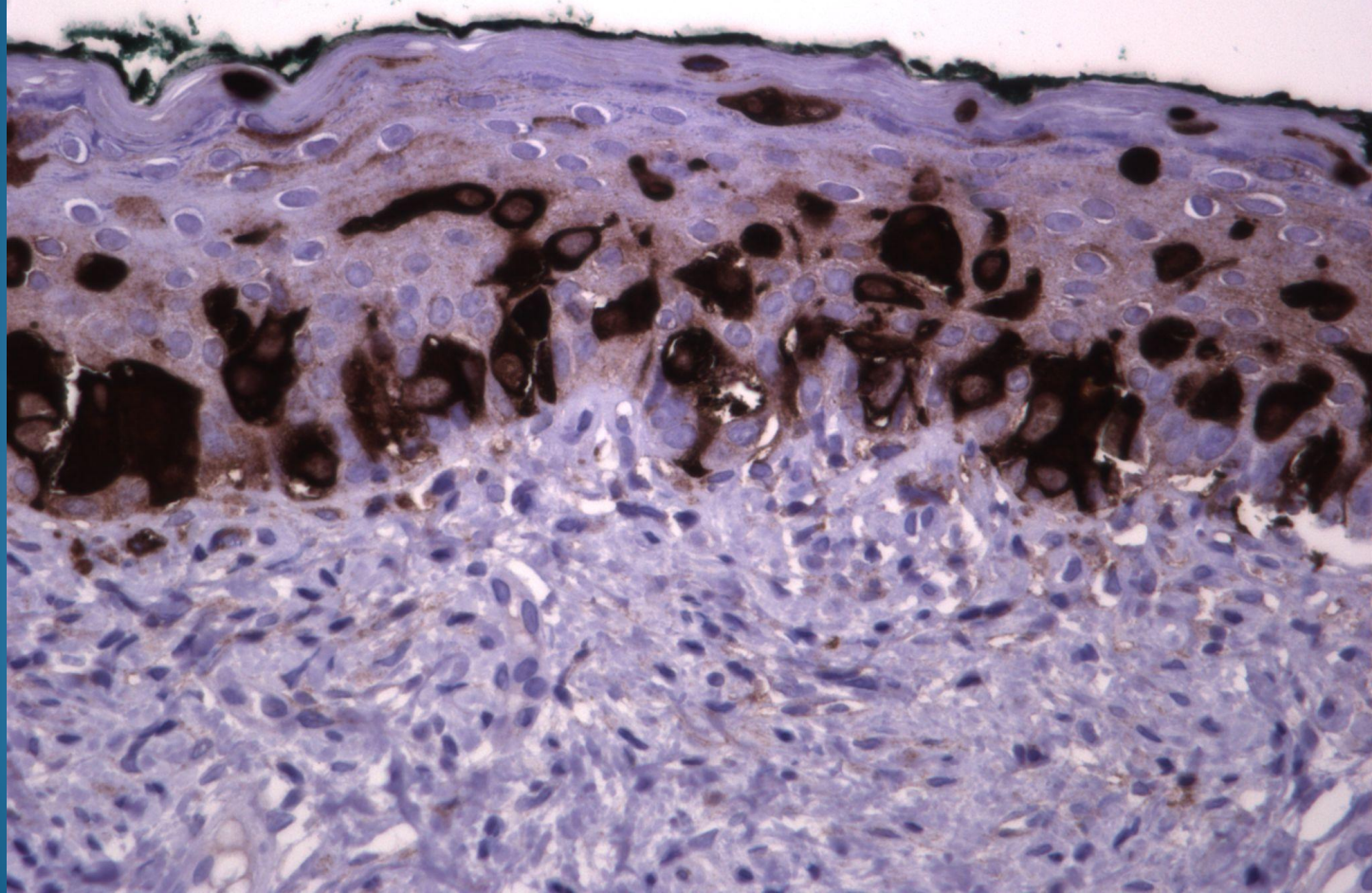


## Mucicarmine



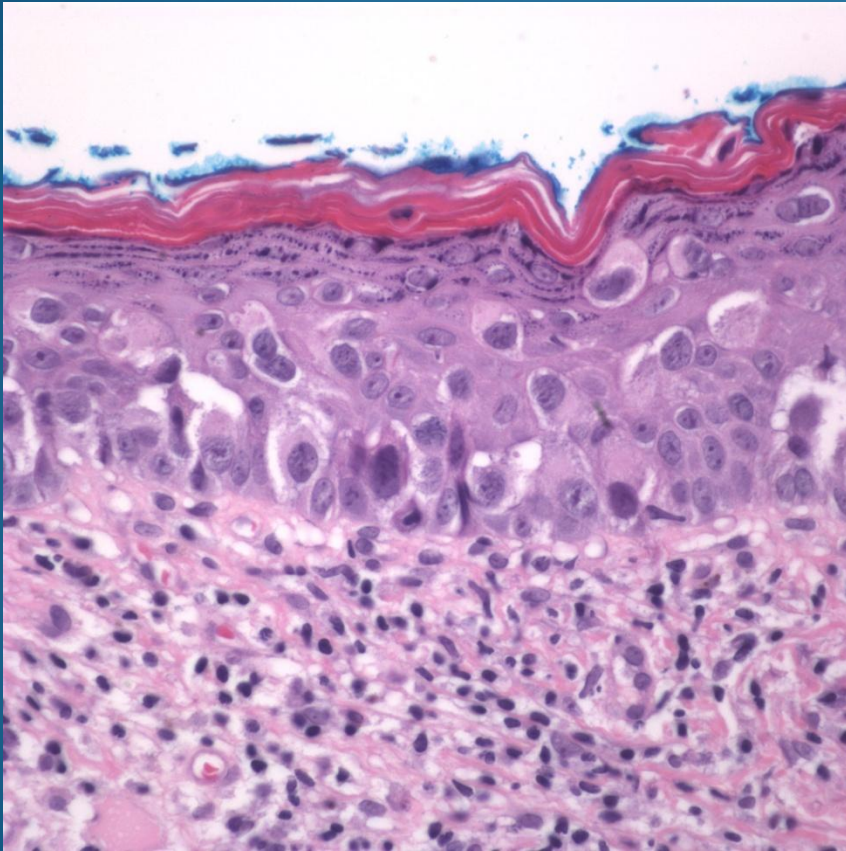


EMA



# Paget's Disease of the Nipple

# Pearls



- Upward intraepithelial scatter by cytologically atypical epithelial cells
- May have rare glandular differentiation and cytoplasmic vacuoles, mucicarmines+
- Rule out Bowen's disease, amelanotic melanoma in situ, and sebaceous carcinoma
- Recommend mammographic evaluation